

# Measure Risk Exposure with Forcepoint's Data Risk Assessment

Sign up to better understand what sensitive data you hold, who can access what, and where risk exists

## Data Risk is Business Risk

A single over-permissioned file or over-shared document can lead to regulatory fines or a full-blown breach. Your sensitive data demands protection, but you can only do that if you know where all of it is.

**\$4.44 million** is the average cost of a data breach, while the average time to identify one stretches **181 days**.



of sensitive data is considered "dark data" – unclassified, unmonitored and potentially exposed across cloud and on-prem environments.

– IBM/Ponemon study – Cost of a Data Breach

## Get a Data Risk Assessment

Forcepoint's free 14-day service helps you better understand your data and risk exposure with our Data Security Posture Management (DSPM) and Data Detection and Response (DDR) solutions.

**With this Data Risk Assessment, you can:**



Rapidly scan and uncover sensitive and hidden data in OneDrive



Identify key areas of data risk such as duplicate and over-permissioned files



Get actionable insights, like file permissions to remediate or revoke public sharing of specific files with regulated data.



Rest assured that Forcepoint does not store sensitive data or credentials

## Here's what the experience looks like in four steps:

### Complete Registration and Activation:

Fill out the registration form and activate your account via the activation email.

### Log in and Open DSPM:

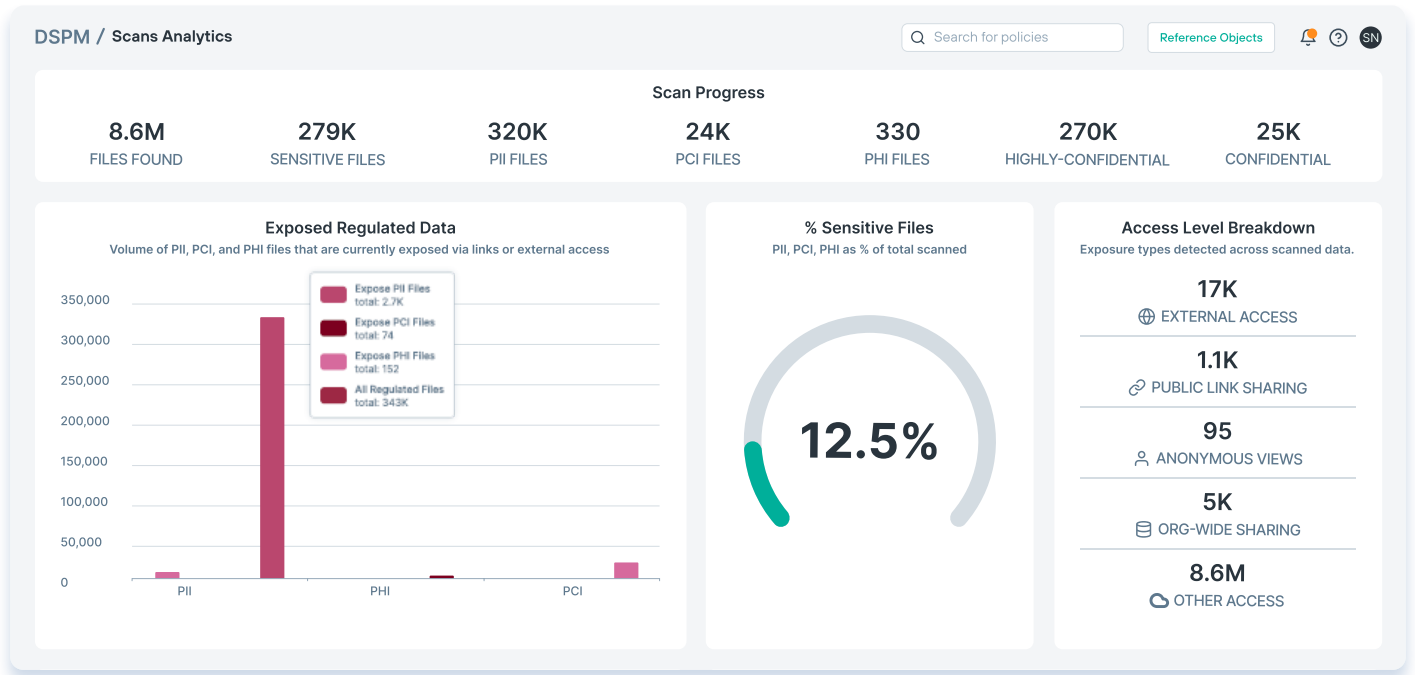
Access Forcepoint Data Security Cloud and DSPM will automatically open.

### Connect and Scan:

Log into your Microsoft account to connect to OneDrive and initiate your first scan.

### Analyze Files:

Within minutes, receive initial results providing insights into your data security posture.



## Forcepoint Data Risk Assessment Differentiators

- Rapid setup gets you up and running in minutes with a streamlined SaaS onboarding process
- AI-driven classification lets you automatically identify and classify sensitive data like PII, PHI and PCI with high AI-enabled accuracy
- Real-time classification and risk scoring allow for rapid prioritization
- File lineage details provide visibility into who has interacted with files including downloads and shares
- Continuous visibility lets you begin to see where your data is, who has access and what's at risk
- Initial results arrive in minutes, providing the foundation for actionable insights derived from a detailed risk posture score and prioritized remediation steps

## The Secret Ingredient

Forcepoint delivers more rapid, accurate and efficient data classification by means of our proprietary AI Mesh. This is a highly networked classification architecture employing a Small Language Model (SLM), deep neural network classifiers, light AI classifiers and other predictive AI and data science capabilities.



"Forcepoint has allowed us really to pinpoint what is the critical data that we must manage, we must lock down."

**Enda Kyne - Chief Technology & Operations Officer**

**Forcepoint**

**Start Your DRA Today!**

Sign up today to automatically detect regulated data and plan remediation.

